

THE INFLUENCE ■ ■ ■ OF HEAVY METAL

Presentations are communication tools
that can be used as demonstrations.



LIST OF CONTENT PRESENTATION

01

CONTENT ONE

Introduction

02

CONTENT TWO

Stereotypes vs reality
about heavy metal

03

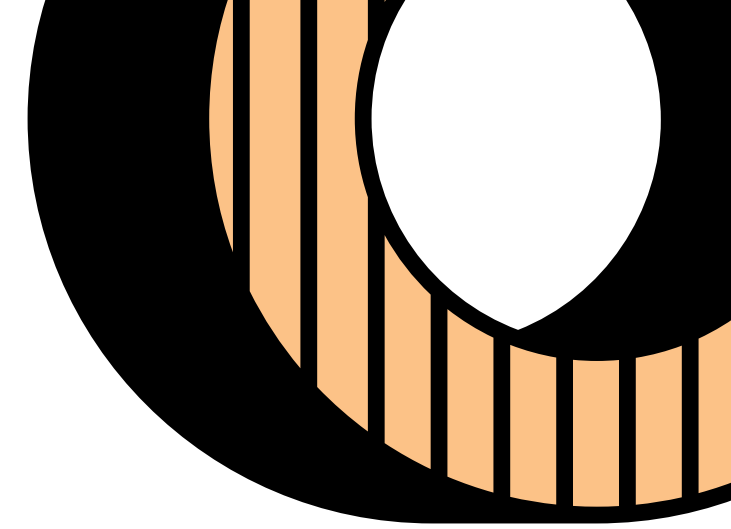
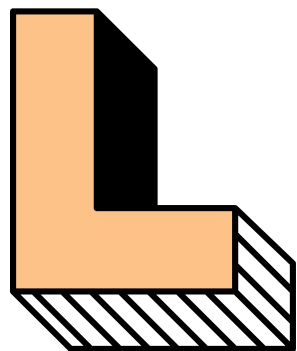
CONTENT THREE

Binocular rivalry test

04

CONTENT FOUR

Conclusion





INTRODUCTION

HEAVY METAL: HAPPINESS

Heavy metal music has gotten a reputation for being violent and evil. The stereotype of people who listen to this type of music is that of a violent and reckless person. However, this is not always the truth. Many studies have been done that prove this theory to be false. These studies are scientifically proven and backed up by professionals and people with experiences.





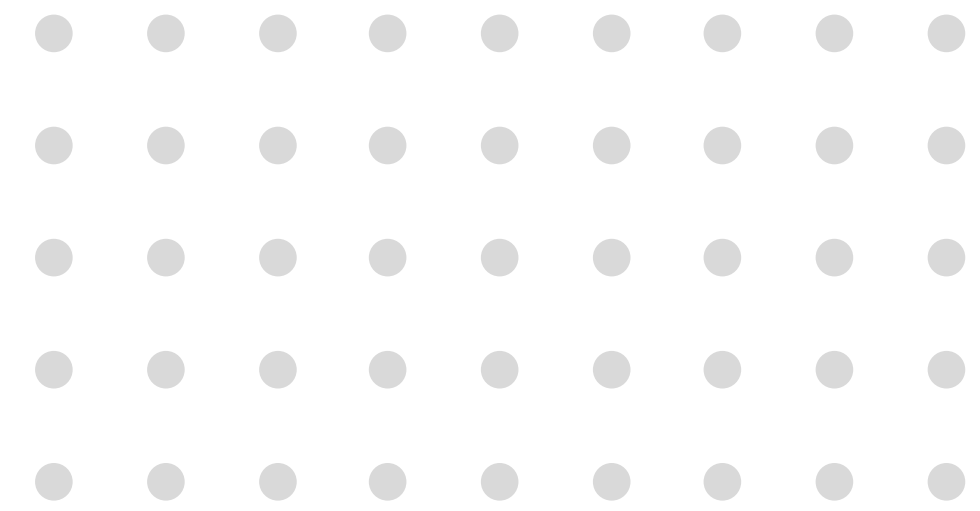
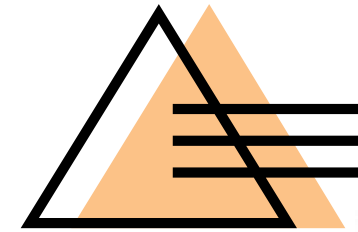
STEREOTYPES VS REALITY

STEREOTYPE

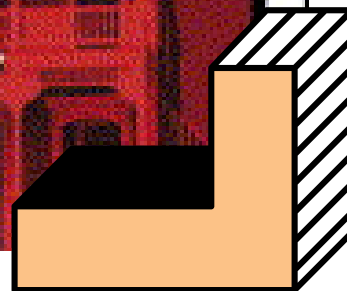
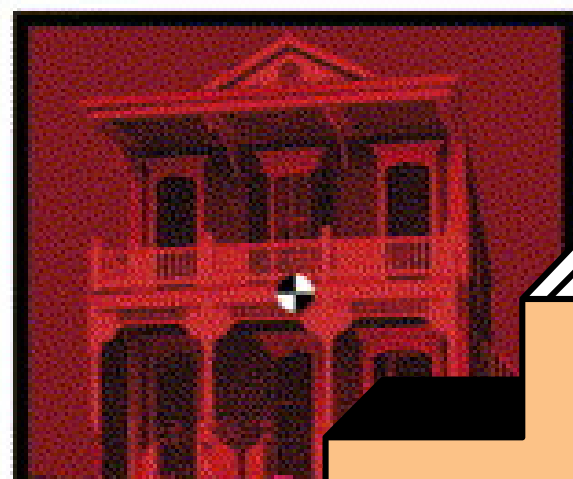
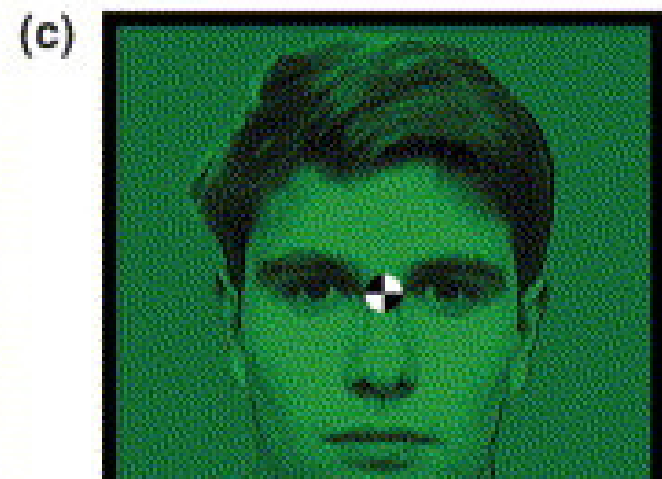
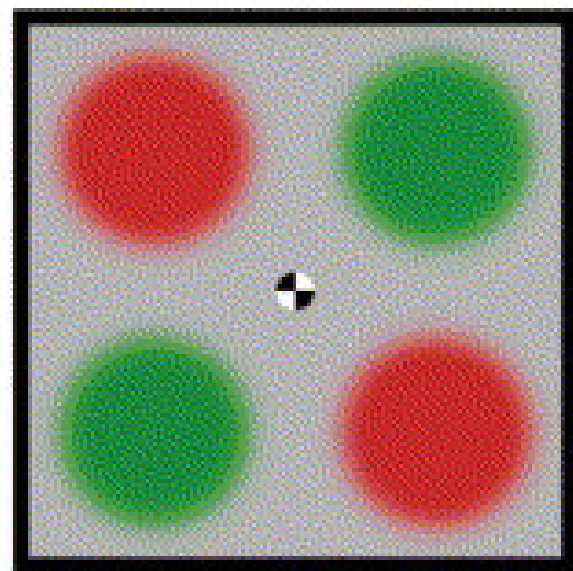
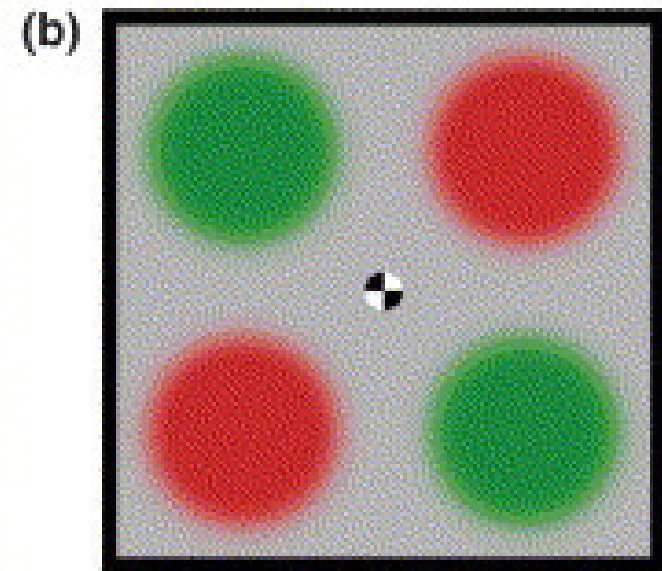
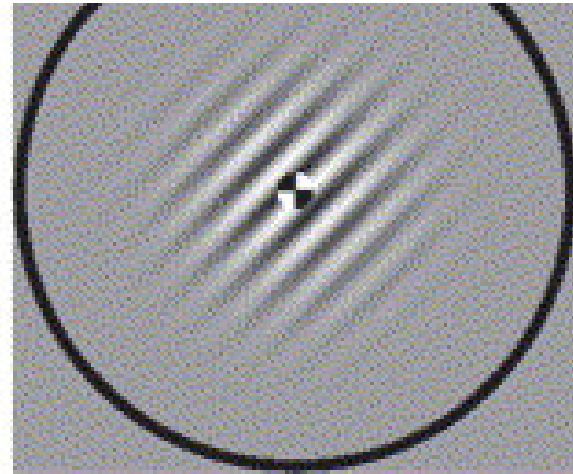
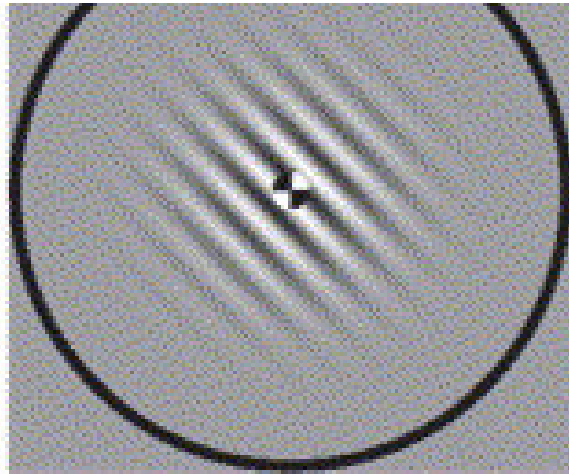
People who listen to heavy metal are violent, angry teenagers who have evil “tendencies” for harming other.

REALITY

People who listen to metal are actually very happy, pleasant, kind and “normal” people who find happiness in heavy metal.



Heavy metal band, *Metallica*



BINOCULAR RIVALRY TEST

Macquarie University led a study using a research method called “binocular rivalry”. In simple words, the brain uses two different images which are combined to show one three dimensional image, which is what we see with our eyes. This study consists in showing two images and letting the brain decide which one it wants to see first. In this particular incident, a certain number of teens (including those who listen to heavy metal) were shown two images; one that was very bloody and violent and one that was neutral. When the images were shown, most if not all teenagers looked at the bloody image first, because a natural instinct of the brain is to look for any possible threat in order to defend ourselves. Later, the teens were told to choose any music they like to calm their nerves from the pictures and those who chose intense music felt just as happy as the ones who chose happy music.

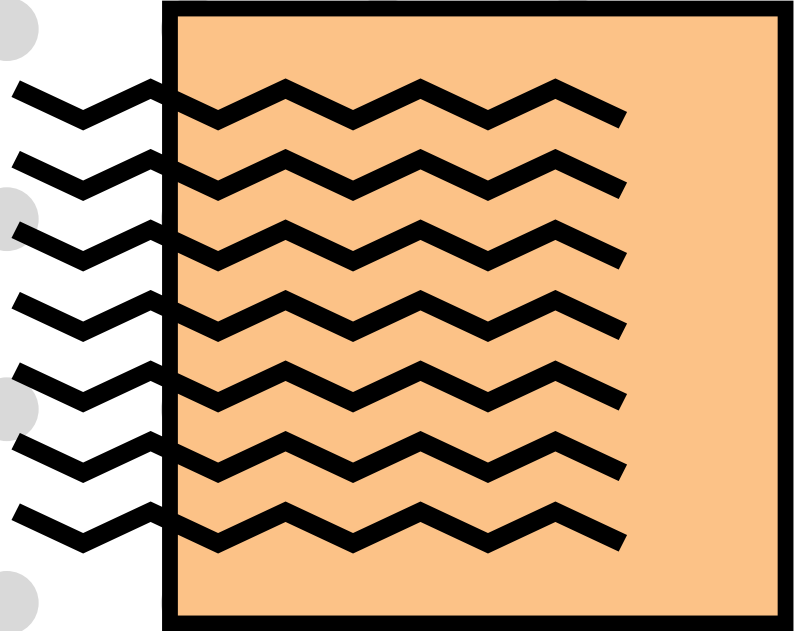
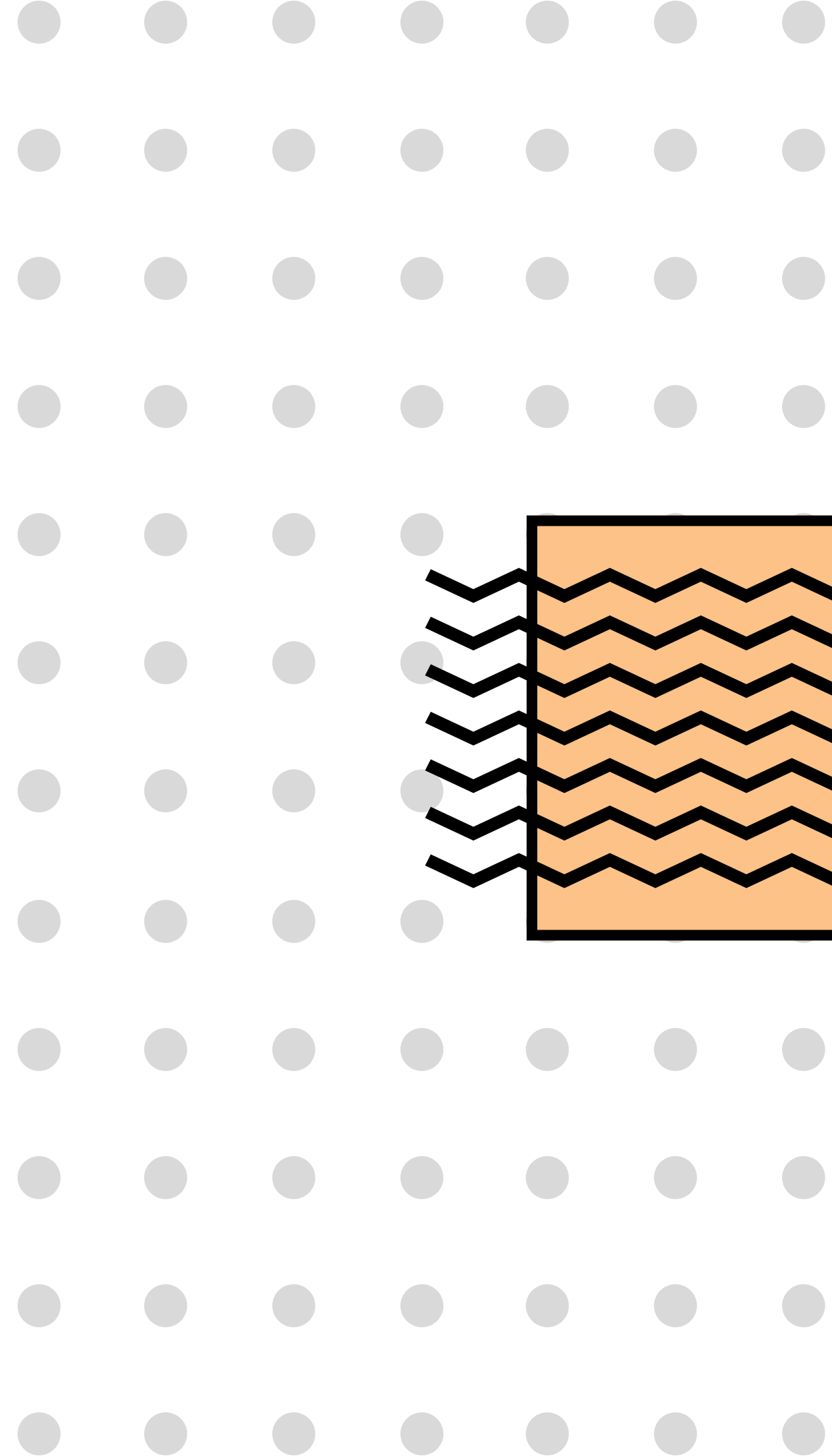
IRON MAIDEN



CONCLUSION



And lastly, like any topic, this music can heavily influence companionship between teens and adults. If you've ever heard of a "mosh pit", you'd know what I'm talking about. This activity (although rough), can really bring people together. So as we discussed, metal music really is not all that bad. Really, if it makes people happy, we shouldn't be stereotyping these people as bad.



**THANKS FOR
WATCHING**



QUESTIONS

- 1 What is binocular rivalry?
- 2 What are the effects of this music?
- 3 Name one stereotype about metal music.
- 4 What were the results of the test?
- 5 How does music affect someone's mood?